




FOWLER

# Display Homes FOR SALE



 5  3  2

**\$1,236,990**

## TRIBECA 34 | Senator Facade

Lot 2458 Donald Street, Marsden Park

Land Size **392.1 sqm** | Total Home Area **34 sq**

**GREAT  
INVESTMENT  
OPPORTUNITY!**

**7% LEASE BACK FOR THE LIFE OF THE VILLAGE**

**\*minimum of 3 years with 4 x 6 monthly options to extend**



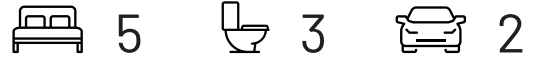
FOWLER

# Display Homes FOR SALE

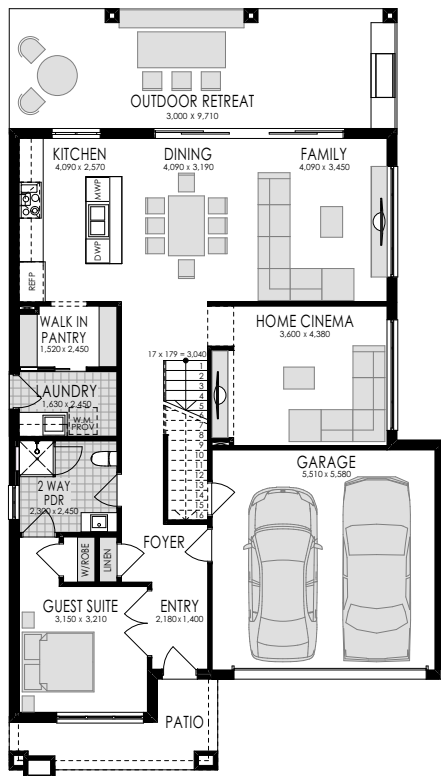
## TRIBECA 34 | Senator Facade

Lot 2458 Donald Street, Marsden Park

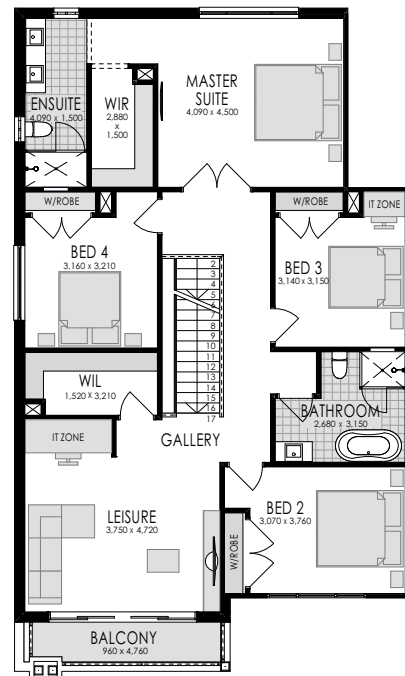
Land Size **392.1 sqm** | Total Home Area **34 sq**



### DUE FOR COMPLETION FEB 19



GROUND FLOOR



FIRST FLOOR

### WHAT'S INCLUDED?

- ✓ 2740mm internal ceiling height to ground floor
- ✓ Ceramic Floor Tiling throughout main areas
- ✓ Internal ground floor door heights to 2340mm
- ✓ Expansive Kitchen with 900mm Smeg Appliances
- ✓ Ducted air-conditioning
- ✓ Impeccable Driveway & landscaping
- ✓ Guest Suite
- ✓ Impressive alfresco entertaining area
- ✓ **and many more Hype Elevate Plus+ upgrades**

### OUTGOINGS PAID BY BUILDER

- ✓ House Cleaning, Gardens & Maintenance
- ✓ Homeworld monthly levy
- ✓ Utilities such as electricity, gas & water

**DISCLAIMER:** Price excludes telephone service, customer account opening fees, stamp duty, legal fees and conveyance costs including titles and property report. Fowler Homes reserves the right to alter the images or descriptions without notice. See a Fowler Homes Sales Consultant for full details of standard inclusions and/or terms and conditions. Fowler advises that pending the time of sale, the package may be a split land and house contract. Council Rates are to be paid by purchaser. As at 24/05/18