



FOWLER

Display Homes FOR SALE



 4  3  2

\$974,650

FOXLEY 23 | Lexington Facade

Lot 1033, 10 Scout Street, Leppington

Land Size **400 sqm** | Total Home Area **23 sq**

**GREAT
INVESTMENT
OPPORTUNITY!**

7% LEASE BACK FOR THE LIFE OF THE VILLAGE

***minimum of 3 years with 4 x 6 monthly options to extend**



FOWLER

Display Homes FOR SALE

FOXLEY 23 | Lexington Facade

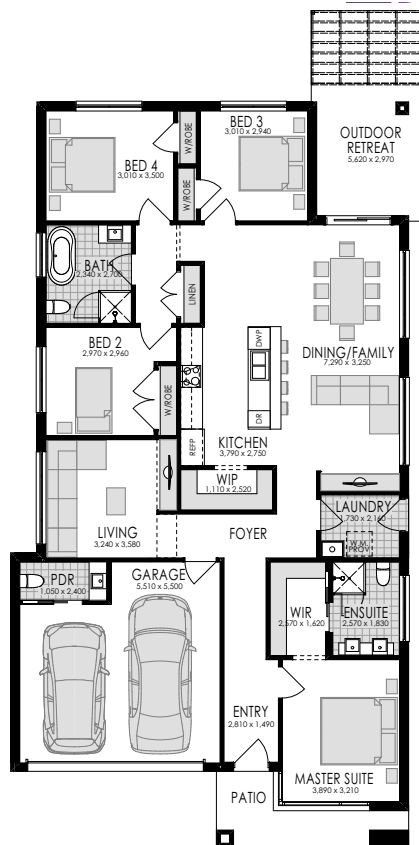
Lot 1033, 10 Scout Street, Leppington

Land Size **400 sqm** | Total Home Area **23 sq**



WILLOWDALE

DUE FOR COMPLETION FEB 19



WHAT'S INCLUDED?

- ✓ 2590mm internal ceiling height
- ✓ Ceramic Floor Tiling throughout main areas
- ✓ Expansive Kitchen
- ✓ Ducted air-conditioning
- ✓ Impeccable Driveway & landscaping
- ✓ LED downlights
- ✓ Impressive alfresco entertaining area
- ✓ **and many more Hype Elevate upgrades**

OUTGOINGS PAID BY BUILDER

- ✓ House Cleaning, Gardens & Maintenance
- ✓ Homeworld monthly levy
- ✓ Utilities such as electricity, gas & water

DISCLAIMER: Price excludes telephone service, customer account opening fees, stamp duty, legal fees and conveyance costs including titles and property report. Fowler Homes reserves the right to alter the images or descriptions without notice. See a Fowler Homes Sales Consultant for full details of standard inclusions and/or terms and conditions. Fowler advises that pending the time of sale, the package may be a split land and house contract. Council Rates are to be paid by purchaser. As at 24/05/18