



FOWLER

Display Homes FOR SALE



 4  3  2

\$1,070,490

BROOKWATER 28 | Miami Facade

Lot 2457 Donald Street, Marsden Park

Land Size **280 sqm** | Total Home Area **28 sq**

**GREAT
INVESTMENT
OPPORTUNITY!**

7% LEASE BACK FOR THE LIFE OF THE VILLAGE

***minimum of 3 years with 4 x 6 monthly options to extend**



FOWLER

Display Homes FOR SALE

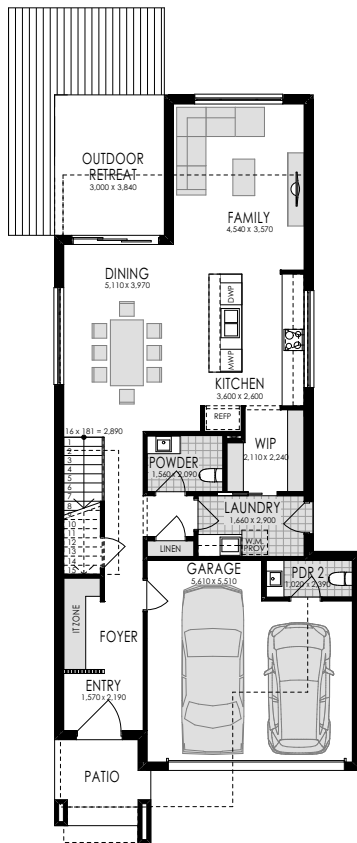
BROOKWATER 28 | Miami Facade

Lot 2457 Donald Street, Marsden Park

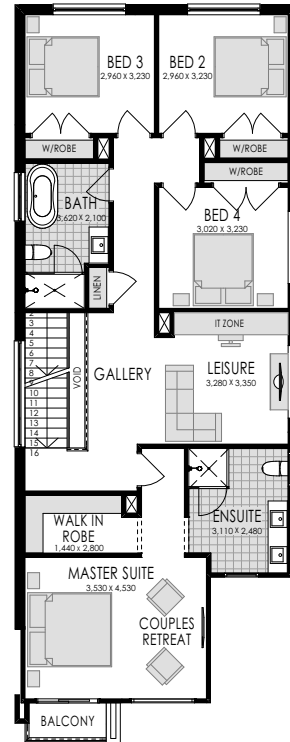
Land Size **280 sqm** | Total Home Area **28 sq**



DUE FOR COMPLETION FEB 19



GROUND FLOOR



FIRST FLOOR

WHAT'S INCLUDED?

- ✓ 2590mm internal ceiling height to ground floor
- ✓ Ceramic Floor Tiling throughout main areas
- ✓ Home security system
- ✓ Gourmet Kitchen
- ✓ Ducted air-conditioning
- ✓ Driveway
- ✓ Impeccable landscaping
- ✓ Impressive alfresco entertaining area
- ✓ LED Downlights
- ✓ **and many more Hype Elevate upgrades**

OUTGOINGS PAID BY BUILDER

- ✓ House Cleaning, Gardens & Maintenance
- ✓ Homeworld monthly levy
- ✓ Utilities such as electricity, gas & water

DISCLAIMER: Price excludes telephone service, customer account opening fees, stamp duty, legal fees and conveyance costs including titles and property report. Fowler Homes reserves the right to alter the images or descriptions without notice. See a Fowler Homes Sales Consultant for full details of standard inclusions and/or terms and conditions. Fowler advises that pending the time of sale, the package may be a split land and house contract. Council Rates are to be paid by purchaser. As at 24/05/18