



FOWLER

Display Homes FOR SALE



 4  2  2

\$799,500

ASPEN 25 | Sublime Facade

Lot 123, 20 Virginia Road, Hamlyn Terrace

Land Size **472 sqm** | Total Home Area **25 sq**

**GREAT
INVESTMENT
OPPORTUNITY!**

RENTAL RETURN OF \$4,722 p/m FOR THE LIFE OF THE VILLAGE
***minimum of 3 years with 4 x 6 monthly options to extend**



FOWLER

Display Homes

FOR SALE

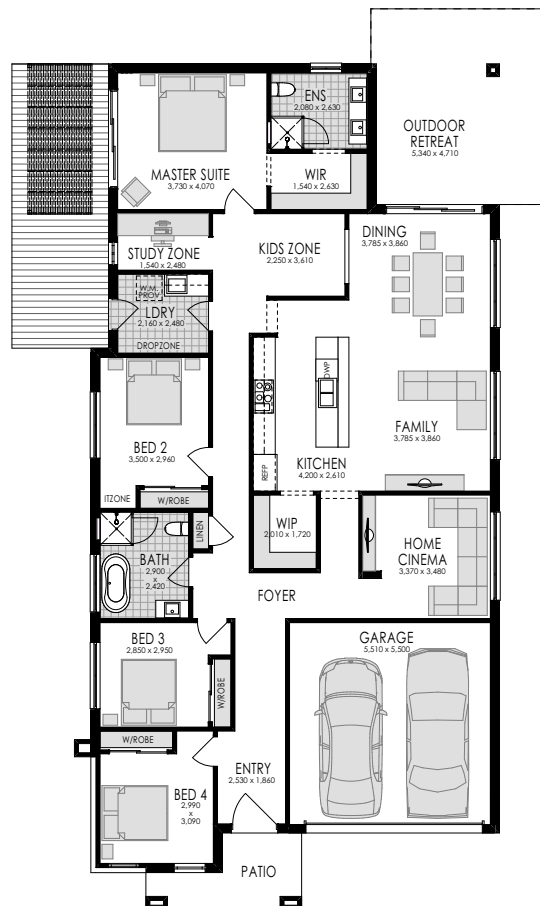
ASPEN 25 | Sublime Facade

Lot 123, 20 Virginia Road, Hamlyn Terrace

Land Size **472 sqm** | Total Home Area **25 sq**



DUE FOR COMPLETION AUG 18



WHAT'S INCLUDED?

- ✓ 2740mm internal ceiling height
- ✓ Ceramic Floor Tiling throughout main areas
- ✓ Home security system
- ✓ Majestic Kitchen with 900mm Smeg Appliances
- ✓ Ducted air-conditioning
- ✓ Driveway
- ✓ Impeccable landscaping
- ✓ Impressive alfresco entertaining area
- ✓ Grand outdoor parents retreat
- ✓ **and many more Hype Elevate Plus+ upgrades**

OUTGOINGS PAID BY BUILDER

- ✓ House Cleaning, Gardens & Maintenance
- ✓ Homeworld monthly levy
- ✓ Utilities such as electricity, gas & water
- ✓ Council Rates

DISCLAIMER: Price excludes telephone service, customer account opening fees, stamp duty, legal fees and conveyance costs including titles and property report. Fowler Homes reserves the right to alter the images or descriptions without notice. See a Fowler Homes Sales Consultant for full details of standard inclusions and/or terms and conditions. As at 24/05/18