



FOWLER

# Display Homes FOR SALE



 4  2  2

**\$998,700**

## ABODE 21 | Culture Facade

Lot 2456 Donald Street, Marsden Park

Land Size **350 sqm** | Total Home Area **21 sq**

**GREAT  
INVESTMENT  
OPPORTUNITY!**

**7% LEASE BACK FOR THE LIFE OF THE VILLAGE**

**\*minimum of 3 years with 4 x 6 monthly options to extend**



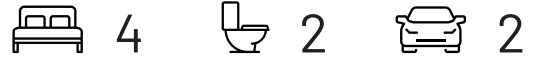
FOWLER

# Display Homes FOR SALE

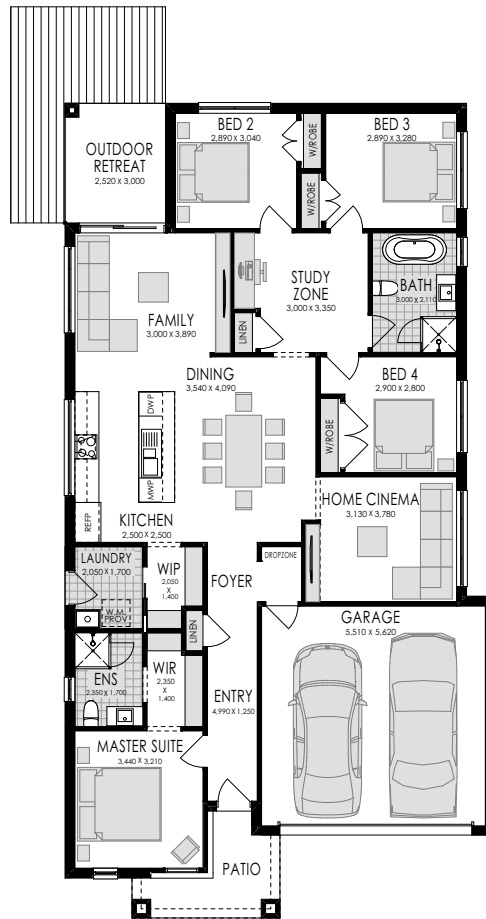
## ABODE 21 | Culture Facade

Lot 2456 Donald Street, Marsden Park

Land Size **350 sqm** | Total Home Area **21 sq**



### DUE FOR COMPLETION FEB 19



### WHAT'S INCLUDED?

- ✓ 2590mm internal ceiling height
- ✓ Ceramic Floor Tiling throughout main areas
- ✓ Home security system
- ✓ Majestic Kitchen with Smeg Appliances
- ✓ Ducted air-conditioning
- ✓ Driveway
- ✓ Impeccable landscaping
- ✓ Impressive alfresco entertaining area
- ✓ LED Downlights
- ✓ **and many more Hype Elevate Plus+ upgrades**

### OUTGOINGS PAID BY BUILDER

- ✓ House Cleaning, Gardens & Maintenance
- ✓ Homeworld monthly levy
- ✓ Utilities such as electricity, gas & water

**DISCLAIMER:** Price excludes telephone service, customer account opening fees, stamp duty, legal fees and conveyance costs including titles and property report. Fowler Homes reserves the right to alter the images or descriptions without notice. See a Fowler Homes Sales Consultant for full details of standard inclusions and/or terms and conditions. Fowler advises that pending the time of sale, the package may be a split land and house contract. Council Rates are to be paid by purchaser. As at 24/05/18