



FOWLER

Display Homes FOR SALE



5 3 2

\$1,289,950

Stunning Lindrum Home Design

Lot 138 Cnr Silverthorne & Mcloughlin Street, Marsden Park

Land Size **483.50 sqm** | Total Home Area **41 sq**

- ✓ Move in by Christmas
- ✓ Purchase Luxurious display home now with delayed settlement until November/December 2019



FOWLER

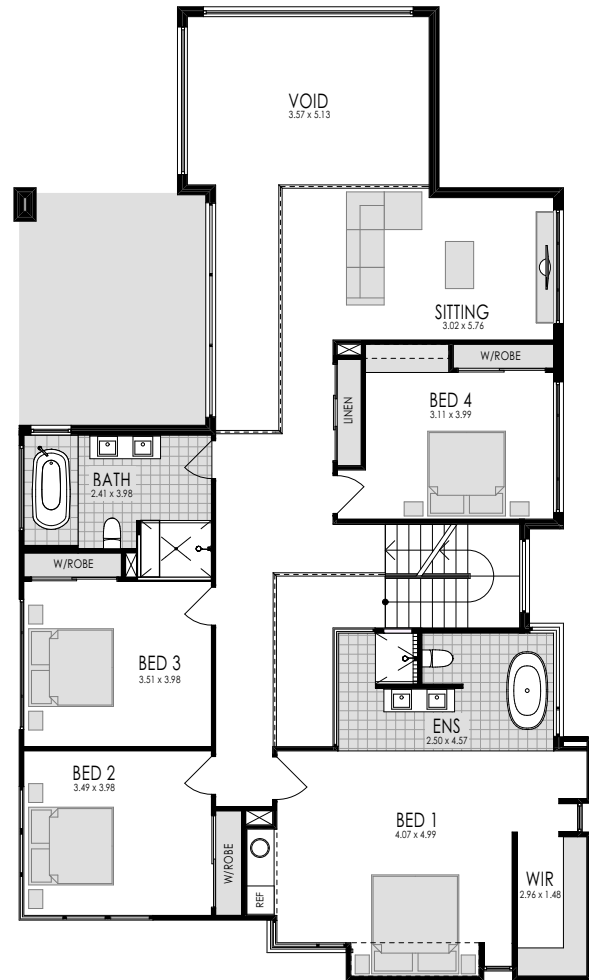
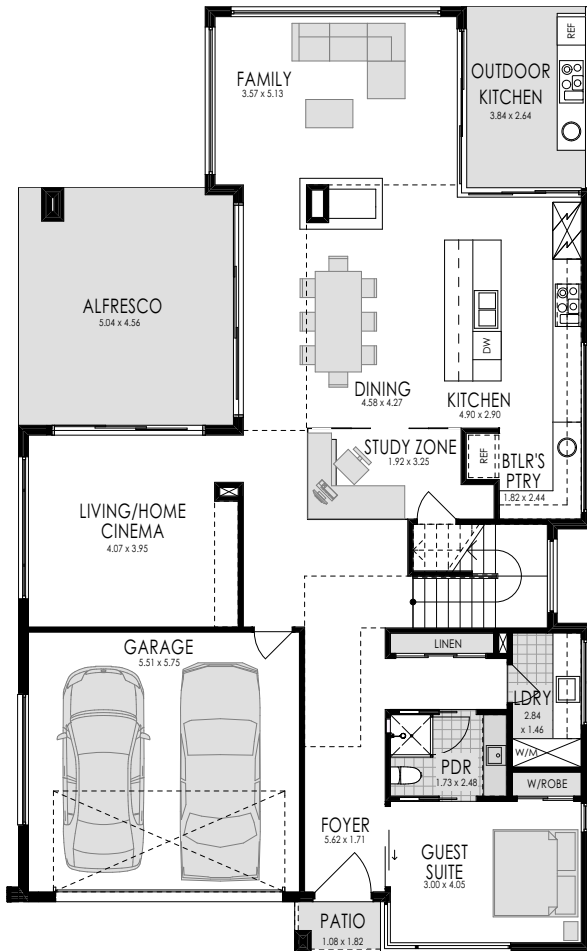
Display Homes FOR SALE

Lindrum Home Design

Lot 138 Cnr Silverthorne & Mcloughlin Street, Marsden Park

5 3 2

Land Size: **483.5 sqm** | Total Home Area: **41 sq**



WHAT'S INCLUDED?

- ✓ 2740mm high ceilings to Ground Floor
- ✓ Impressive chefs kitchen
- ✓ Extensive floor coverings
- ✓ Ducted Air-conditioning
- ✓ Alarm
- ✓ Downlights
- ✓ Double Sided Fireplace
- ✓ Butlers Pantry fitout
- ✓ Frameless glass balustrade to void
- ✓ Hebel® Power Panel Rendered Finish Home
- ✓ Hebel® Power Floor system to first floor over joists
- ✓ Landscaping
- ✓ Driveway
- ✓ Sales office will be converted to garage upon hand over
- ✓ **+ Plus many more upgrades**

DISCLAIMER: Price excludes telephone service, customer account opening fees, stamp duty, legal fees and conveyance costs including titles and property report. Fowler Homes reserves the right to alter the images or descriptions without notice. See a Fowler Homes Sales Consultant for full details of standard inclusions and/or terms and conditions.

Package Printed Date: 16/07/2019