



FOWLER

Display Homes FOR SALE



5



4



2

\$1,049,950

Stunning Galleria Home Design

Lot 137 Mcloughlin Street, Marsden Park

Land Size **375 sqm** | Total Home Area **33.93 sq**

- ✓ Move in by Christmas
- ✓ Purchase luxurious display home now with delayed settlement until November/December 2019



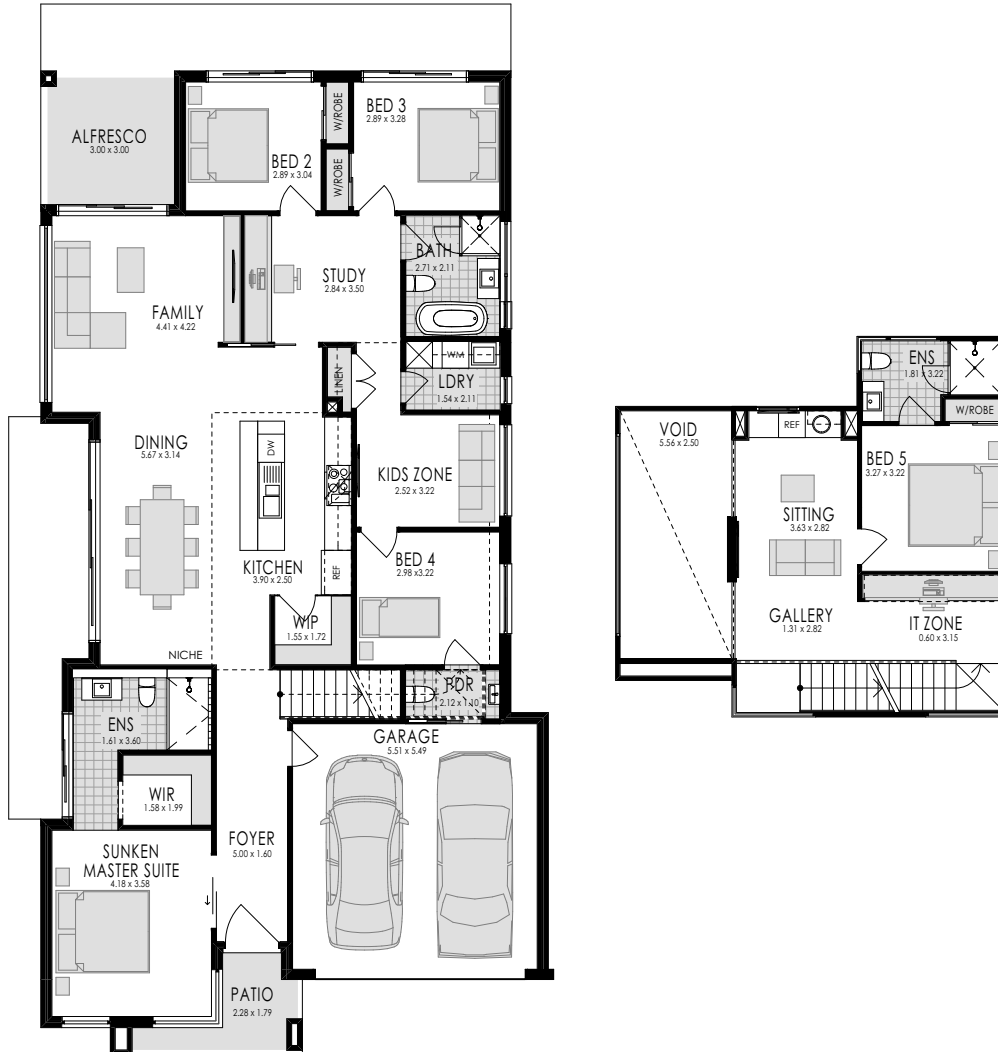
FOWLER

Display Homes FOR SALE

Galleria Home Design Lot 137 Mcloughlin Street, Marsden Park

5 4 2

Land Size: **375 sqm** | Total Home Area: **33.93 sq**



WHAT'S INCLUDED?

- ✓ Impressive Loft Option with wet bar and large void over dining
- ✓ 2740mm high ceilings to Ground Floor & 2590mm high ceilings to First Floor
- ✓ Gourmet kitchen
- ✓ Smeg Appliances
- ✓ Extensive floor coverings
- ✓ Ducted Air-conditioning
- ✓ Alarm
- ✓ Downlights
- ✓ Stunning Master Suite with private courtyard
- ✓ Freestanding Bath Tub
- ✓ Frameless glass balustrade to void
- ✓ Two separate study fitouts
- ✓ Landscaping
- ✓ Driveway
- ✓ **+ Plus many more upgrades**

DISCLAIMER: Price excludes telephone service, customer account opening fees, stamp duty, legal fees and conveyance costs including titles and property report. Fowler Homes reserves the right to alter the images or descriptions without notice. See a Fowler Homes Sales Consultant for full details of standard inclusions and/or terms and conditions.

Package Printed Date: 16/07/2019